

⚠ WARNING

Please read and understand these instructions completely before installation to avoid possible injury to yourself, or damage to the accessory or vehicle.

CAUTION:

- This installation should be performed by an authorized Yamaha dealer or a qualified mechanic. Some components require information from the model's service manual for proper installation or adjustment. Be sure to have the service manual on hand, if necessary, before proceeding with the installation.
- Alteration of emission-related components constitutes tampering under Federal and State laws and can lead to substantial fines and penalties if used other than in closed-course competition.
- Engine-related competition parts are intended for closed-course racing applications only.

DEALER:

These instructions contain important information for future reference and *must* be given to the customer.

WARRANTY INFORMATION:

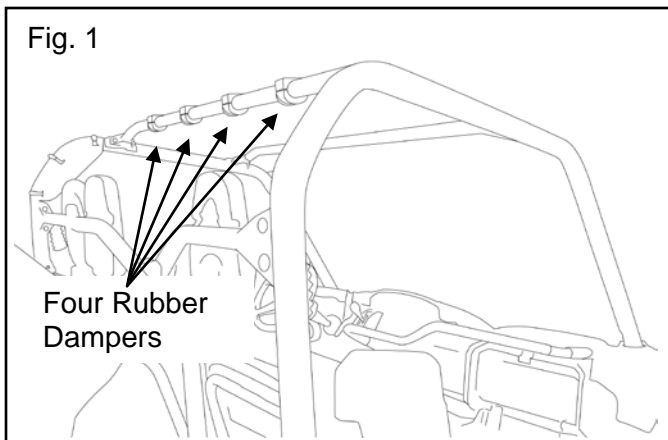
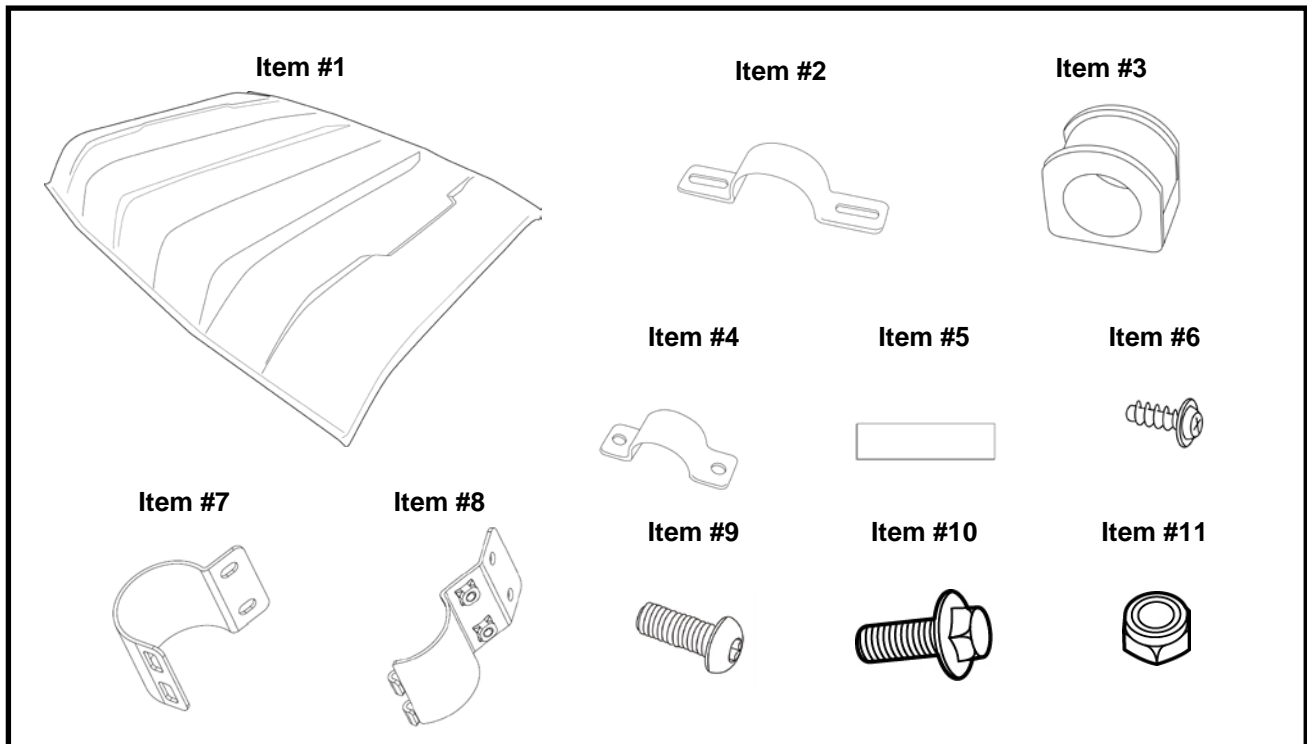
- Genuine Yamaha accessories are covered by a 90-day warranty against defects in material or workmanship. Labor for replacement of defective components is not covered. See your Yamaha dealer for a copy of the warranty statement.
- The Limited Warranty provided with new Yamaha vehicles has exclusions for certain failures, including those caused by competition or racing use (except YZ and WR motorcycle models) as well as by abnormal strain or abuse. While installation of these components will not "void" your vehicle's warranty, specific failures adjudged by Yamaha to have resulted from the installation of accessory components or other modifications, or from competition use (except YZ and WR motorcycle models), may not be covered by warranty or Yamaha Extended Service.

PARTS LIST:

This kit contains the following components. Before beginning installation confirm there are no missing or damaged components.

Item #	Part Number	Description	Qty
--	1XD-K84A0-V0	Molded Sun Top	1
1	*	Sun Top	1
2	*	Large Support Clamp	4
3	*	Rubber Damper	4
4	*	Small Support Clamp	4
5	*	Tape Damper	8
6	*	Pan Tapping Screw	16
7	*	Front Clamp	2
8	*	Back Clamp	2
9	*	Button Head Bolt	4
10	*	Flange Bolt	4
11	*	Flange Nut	4

* Part supplied with kit only and not available separately.

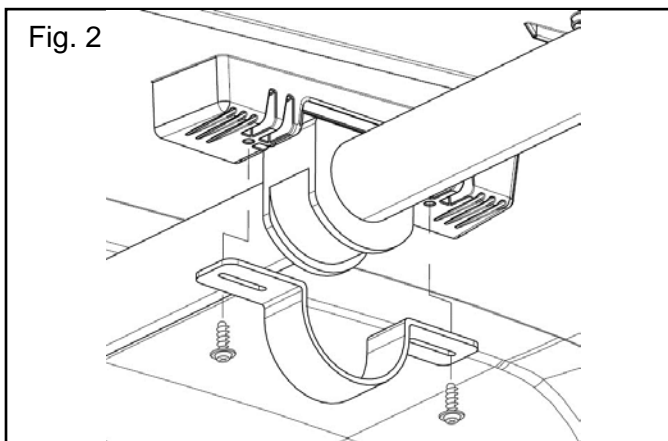


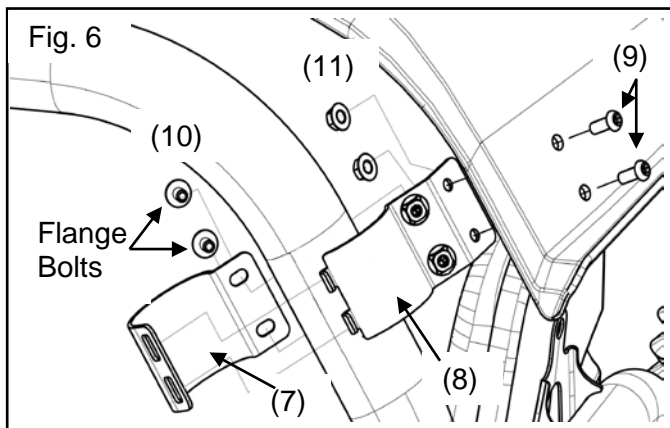
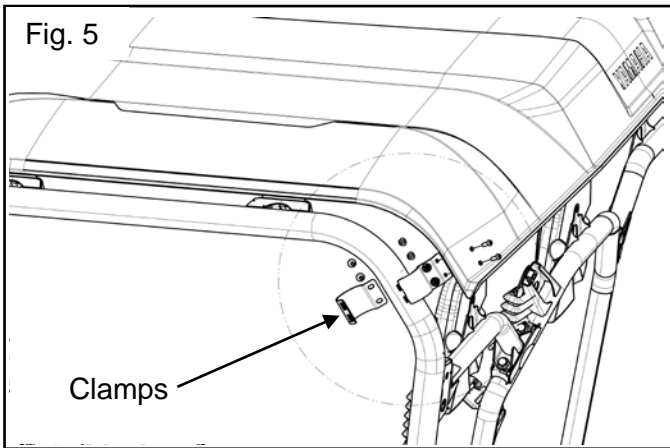
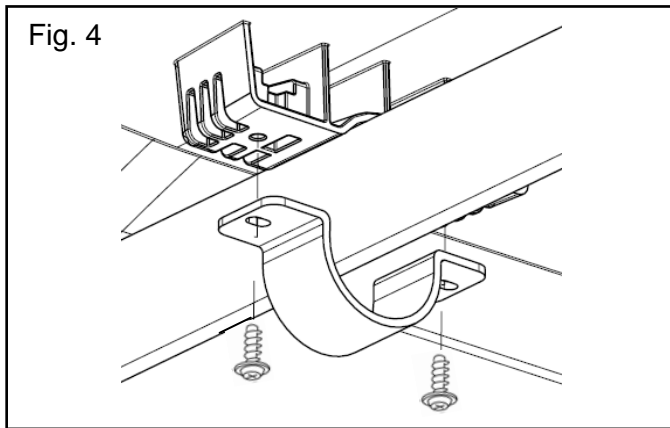
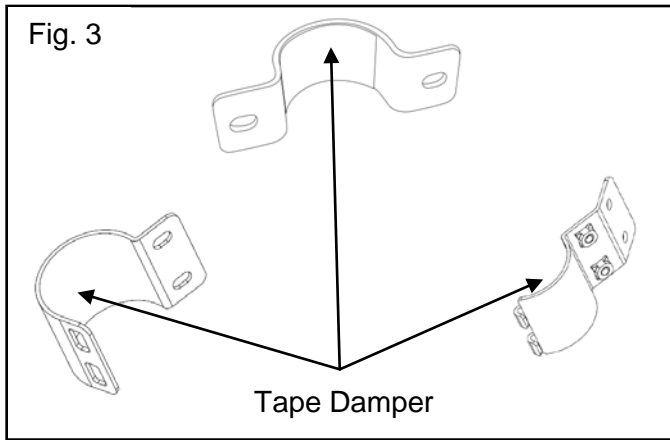
PREPARATION:

1. Place vehicle on a secure and level surface.
2. Set the parking brake.
3. Clean all mounting surfaces before beginning installation.

INSTALLATION:

1. Place the four rubber dampers (3) on the back roof support as shown in (Fig. 1).
2. Place the sun top (1) on the roof support.
3. Slide the 4 rubber dampers into the 4 slots of the sun top and fit the large support clamps (2) to the sun top using the pan tapping screws (6) as shown in (Fig. 2). Do not tighten them at this time.
4. Locate the small support clamps (4), front and back clamps (7 & 8), and the tape dampers (5). Clean the inner surfaces of the clamps and apply the tape damper to the support clamps as shown in (Fig. 3).
5. Fit the small support clamps with the applied tape damper to the front mounting points in the sun top using the pan tapping screws (6) as shown in (Fig. 4). Do not tighten them at this time.





6. Fit the back clamps (8) to the back of the sun top using the button head bolts (9), and the flange nuts (11) as shown in (Fig. 5 & 6). Torque the flange nuts to 6 Nm (0.6 m • kg, 4.3 ft • lb).
7. Fit the front clamps (7) to the back clamps with the flange bolts (10) as shown in (Fig. 6). Torque the flange bolts to 6 Nm (0.6 m • kg, 4.3 ft • lb).
8. Torque the pan tapping screws to 3 Nm (0.3 m • kg, 2.1 ft • lb).

CAUTION:

Remove Molded Sun Top if unit is to be towed on a trailer on public roads.

MAINTENANCE:
Periodically check all hardware for tightness and re-torque as required.

CARE AND CLEANING:
Wash using a mild soap and water solution and soft cloth.

CUSTOMER SERVICE:
For further information see your Yamaha dealer.

ESTIMATED TIME TO INSTALL: 0.3 HRS